



# HRSA HIV/AIDS Bureau Updates

CDC/HRSA Advisory Committee on HIV, Viral Hepatitis, and STD  
Prevention and Treatment

*November 13, 2019*

**Dr. Laura Cheever, MD, ScM**  
**Associate Administrator**  
**HIV/AIDS Bureau (HAB)**

**Vision: Healthy Communities, Healthy People**



# HRSA's HIV/AIDS Bureau (HRSA HAB) Vision and Mission

---

## Vision

Optimal HIV/AIDS care and treatment for all.

## Mission

Provide leadership and resources to assure access to and retention in high quality, integrated care, and treatment services for vulnerable people with HIV and their families.

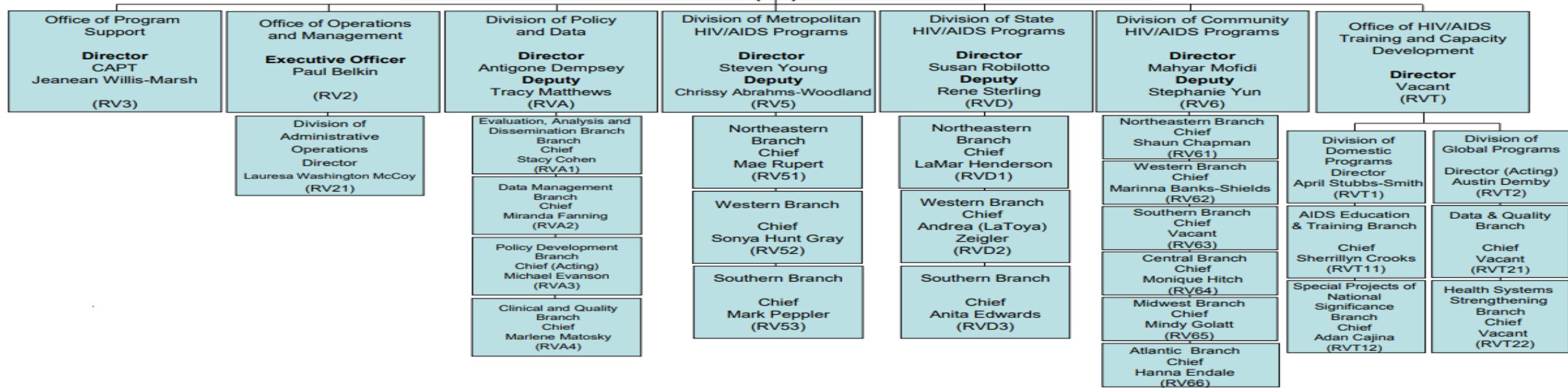
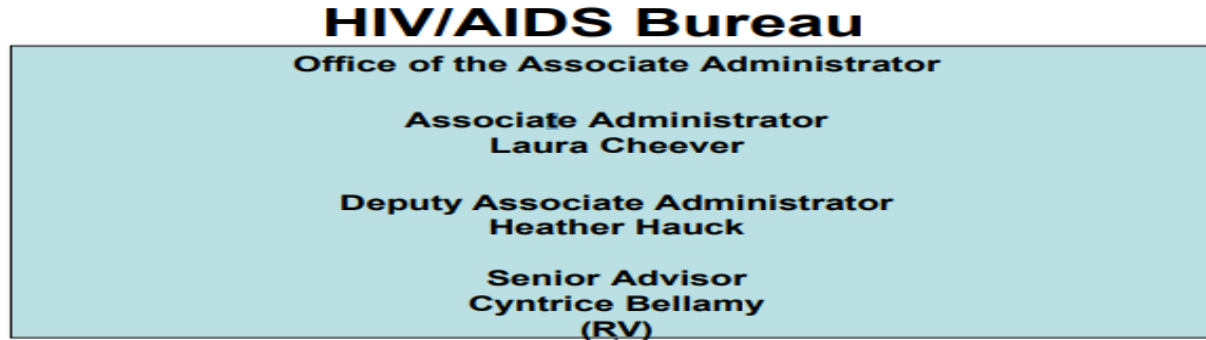


# HRSA HAB General Updates



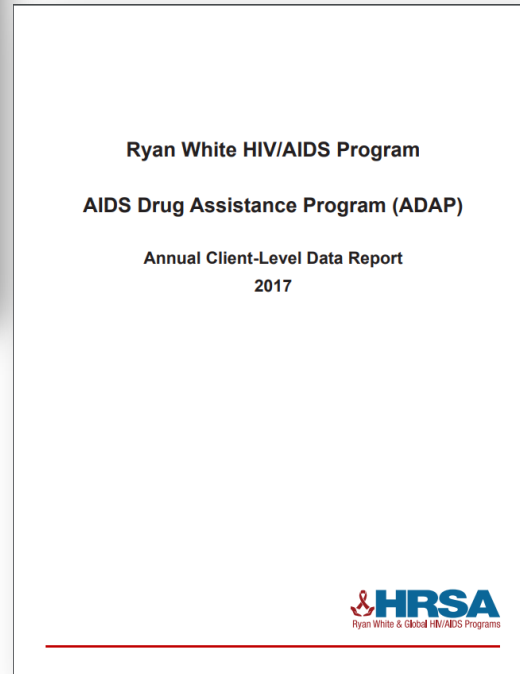
# HRSA HAB Organizational Chart

10/1/2019



# Recently Released Data & Reports

- **RWHAP AIDS Drug Assistance Program (ADAP) Annual Client-Level Data Report**
- **Oral Health Data Report**
- **2019 Ryan White HIV/AIDS Program Highlights: Advancing Innovation to End the HIV Epidemic**
- **2017 Ryan White HIV/AIDS Program State Profiles**



# HRSA Ryan White HIV/AIDS Program Moving Forward



# Identifying the Challenges Ahead

## People with HIV in care

- Improve viral suppression rates
- Decrease disparities

## People newly diagnosed with HIV

- Enhance linkage to care
- Enhance engagement in care

## People with HIV out of care

- Expand re-engagement in care
- Improve retention in care

# Responding to Challenges: Recent Changes to HRSA HAB Policies

**People in care: Improve viral suppression and decrease disparities**

- CQM updates reduce administrative burden with focus on improving high-utilization services
- Expand access to housing through Part C and reduce administrative burden

**Newly diagnosed: Enhance linkage to and engagement in HIV care**

- Rapid eligibility determinations increase opportunities to engage newly diagnosed people with HIV in care

**People out of care: Expand re-engagement and retention for those diagnosed**

- Clarifications on providing HRSA RWHAP services in correctional settings facilitate engagement and retention in care for people who are justice-involved





# Responding to Challenges: HRSA HAB Strategies and Activities



## Apply Implementation Science

- Capacity Building in the RWHAP to Support Innovative Program Model Replication
- HRSA HAB Compilation of Best Practice Strategies and Interventions
- Using Evidence-Informed Interventions to Improve Health Outcomes (E2i)
- Evidence-Informed Approaches to Improve Health Outcomes



## Engage Community & Experts

- Building Leaders of Color (BLOC)
- Evaluation of RWHAP Eligibility and Recertification
- Reimagining RWHAP Part D
- Technical Expert Panels: Housing; People who are Justice-Involved; Women; People Over 50



## Address Co-occurring Conditions

- Enhancing Linkage of Sexually Transmitted Infection (STI) and HIV Surveillance Data in the RWHAP
- Strengthening Systems of Care for People with HIV and Opioid Use Disorder
- Improving STI Screening and Treatment among People with HIV

# Responding to Challenges: Using Implementation Science

## Using Evidence-Informed Interventions to Improve Health Outcomes for People with HIV (E2i)

- Implementation science used to identify interventions with demonstrated effectiveness
- Prioritizing interventions that are effective in improving care and treatment outcomes:
  - **Transgender Women:**
    - Healthy DIVAS; T.W.E.E.T.
  - **Black MSM**
    - CONNECT; PEERS MI, TXTXT
  - **Trauma Informed Care**
    - TIA/CHAGE; Cognitive Processing Therapy, Seeking Safety
  - **Behavioral Health Integration**
    - Buprenorphine, CoCM, S.B.I.R.T.



# Responding to Challenges: Implementation Science

## Using Evidence-Informed Interventions to Improve Health Outcomes for People with HIV (E2i)

- Implementation science used to identify interventions with demonstrated effectiveness
- Prioritizing interventions that are effective in improving care and treatment outcomes

- Healthy DIVAS
- T.W.E.E.T.

Transgender  
Women

- CONNECT
- PEERS MI
- TXTXT

Black MSM

- TIA/CHANGE
- Cognitive  
Processing  
Therapy
- Seeking Safety

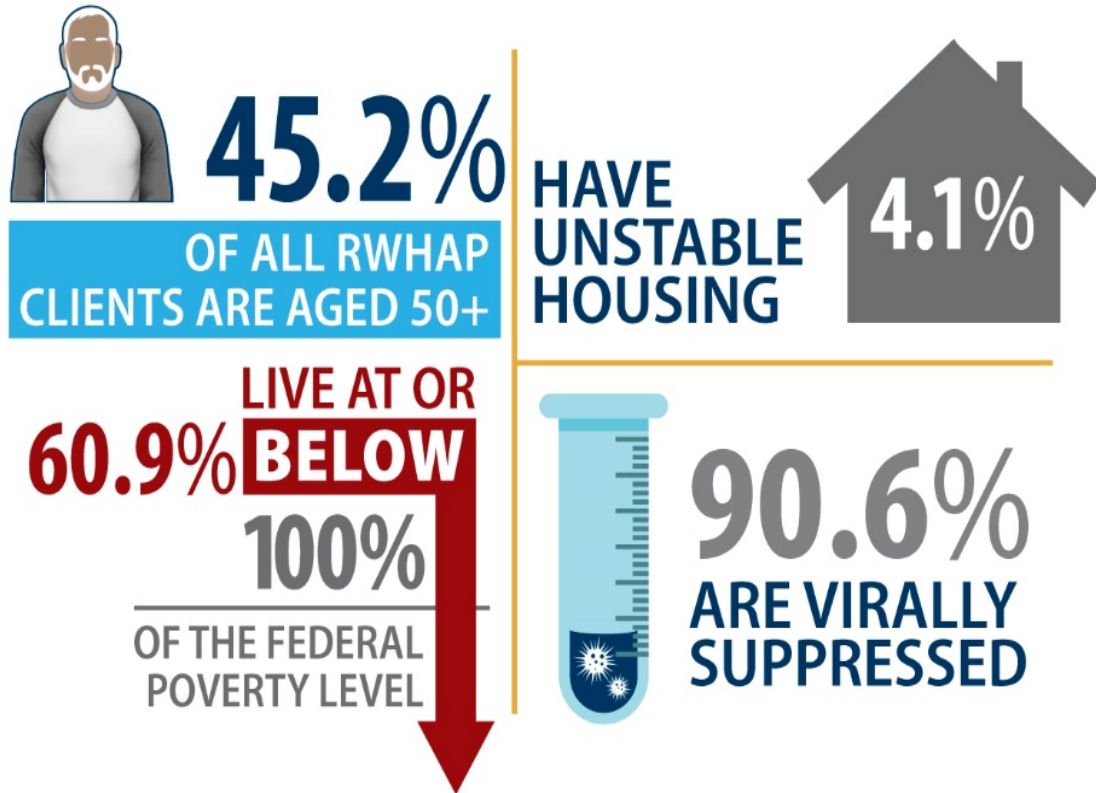
Trauma  
Informed Care

- Buprenorphine
- CoCM
- S.B.I.R.T.

Behavioral  
Health  
Integration



# Responding to Challenges: Focus on People with HIV over 50



- **Policy Clarification Notice:** RWHAP funds can pay Medicare premiums and cost sharing
- **CROI Poster Presentation:** Projected growth and needs of older adults in the RWHAP
- **AETC National Coordinating Resource Center Toolkit:** Care of People Aging with HIV
- **CHAC Recommendations Letter:** Develop a tool to support HIV providers' care for people with HIV as they age
- **HIV.gov Blog:** Growing Ryan White Client Population Over 50 Years Old on HIV.gov.
- **ACE TA Center:** Training on how to leverage Medicare for people with HIV
- **Technical Expert Panel:** in planning stages

# Questions



# Thank You!

---

**Laura Cheever, MD, ScM**  
**Associate Administrator**

**HIV/AIDS Bureau (HAB)**

**Health Resources and Services Administration (HRSA)**

**Web: [hab.hrsa.gov](http://hab.hrsa.gov)**

**Twitter: [twitter.com/HRSAgov](https://twitter.com/HRSAgov)**

**Facebook: [facebook.com/HHS.HRSA](https://facebook.com/HHS.HRSA)**





## Connect with HRSA

To learn more about our agency, visit

[www.HRSA.gov](http://www.HRSA.gov)



Sign up for the HRSA *eNews*

FOLLOW US:

